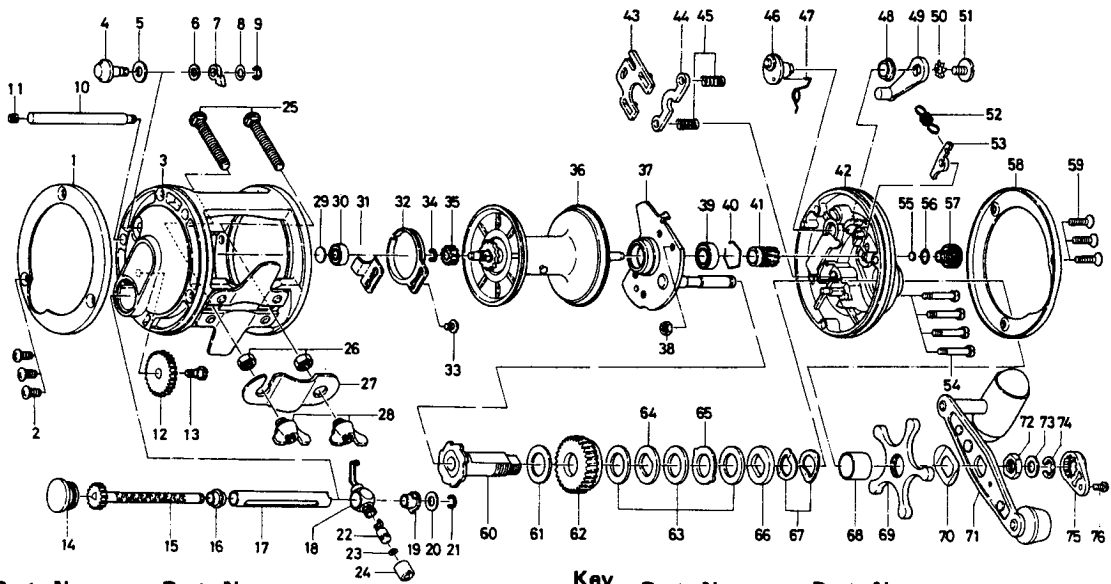


MULTIPLYING REEL SEALINE47SH



Key No.	Parts No.	Parts Name	Key No.	Parts No.	Parts Name
1	B21-5401	Left side outer ring	39	636-6401	Ball bearing B
2	354-0801	Left side plate screw	40	170-7701	Bearing retainer
3	B21-5102	Frame assembly	41	E15-1601	Pinion gear
4	B21-6601	Click button	42	B21-4702	Right side plate
5	375-9301	Click button washer	43	041-5701	Yoke plate
6	375-1101	Click pawl washer A	44	041-5801	Yoke
7	030-6611	Click pawl	45	145-2411	Yoke spring
8	373-1600	Click pawl washer B	46	B12-0301	Clutch cam
9	320-1402	Click pawl retainer	47	145-2501	Clutch spring
10	B21-6301	Stabilizer bar	48	B35-2501	Clutch lever screw holder
11	B76-3201	Stabilizer bar spring	49	782-5401	Clutch lever
12	B21-5801	Idle gear	50	160-8001	Clutch lever lock washer
13	351-1801	Idle gear screw	51	363-5301	Clutch lever screw
14	B40-6701	Left side cap	52	145-2801	Anti-reverse pawl spring
15	B21-5901	Worm shaft	53	B12-0701	Anti-reverse pawl
16	B10-0301	Worm bearing A	54	B34-3301	Set plate screw
17	B21-6201	Level wind guard	55	B75-6101	Spacer B
18	B21-6401	Line guide	56	637-0601	"O" ring
19	B09-9701	Worm bearing B	57	E15-1501	Cast control cap
20	373-1302	Worm shaft holder washer	58	B21-4901	Right side outer ring
21	320-5901	Worm shaft retainer	59	353-5204	Right side plate screw
22	B91-2601	Line guide pawl	60	B12-1101	Drive shaft
23	375-0800	Line guide washer	61	375-2901	Drive shaft washer
24	341-5901	Pawl cap	62	E15-1801	Drive gear
25	353-9801	Clamp bolt	63	375-9903	Drag washer
26	341-9701	Clamp nut	64	376-3401	Key washer A
27	041-5601	Rod brace	65	376-3501	Eared washer
28	342-2111	Rod brace nut	66	375-6204	Key washer B
29	375-7403	Spacer A	67	151-8701	Drag spring washer
30	633-8811	Ball bearing A	68	B36-5101	Spacing sleeve
31	B21-5501	Click spring retainer	69	B21-5001	Star drag
32	160-7922	Click spring	70	B17-2801	Friction washer
33	352-9501	Click spring screw	71	B12-1603	Handle assembly
34	320-8002	Spool gear retainer	72	B26-7403	Handle nut
35	403-2901	Spool gear	73	371-0605	Handle nut washer
36	E15-1901	Spool assembly	74	320-7601	Handle nut retainer
37	B30-7901	Set plate	75	B15-2301	Handle nut plate
38	B03-7201	Set plate screw retaining nut	76	351-1801	Handle nut plate screw