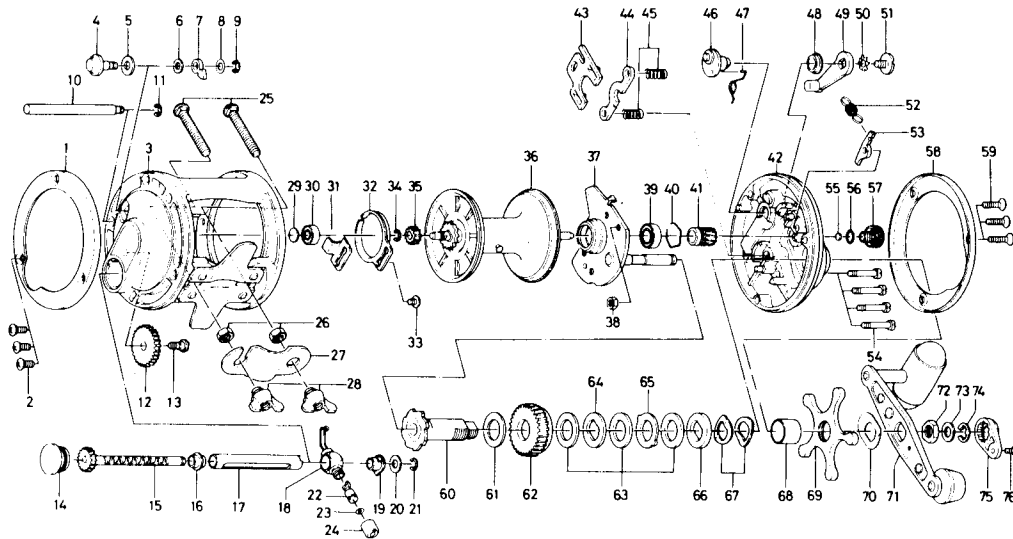


Conventional Reel **Sealine 47H**



Key No.	Parts No.	Parts Name	Key No.	Parts No.	Parts Name
1	B21-5401	L. S. ring	39	636-6401	Ball bearing
2	354-0801	L. S. plate screw	40	170-7701	Ball bearing retaining ring
3	B21-5101	Frame	41	750-6012	Pinion gear
4	B21-6601	Click button	42	B21-4701	R. S. plate
5	375-9301	Click button washer	43	041-5701	Eccentric jack
6	375-1101	Click claw washer A	44	041-5801	Pinion yoke
7	030-6611	Click claw	45	145-2411	Clutch spring
8	373-1600	Click claw washer B	46	B12-0301	Eccentric cam
9	320-1402	Click claw retainer	47	145-2501	Eccentric cam spring
10	R21-6301	Frame post	48	B35-2501	Clutch lever screw holder
11	320-1402	Frame post retainer	49	782-5401	Clutch lever
12	B21-5801	Cog wheel	50	160-8001	Clutch lever lock washer
13	351-1801	Cog wheel screw	51	363-5301	Clutch lever screw
14	B40-6701	Left side cap	52	145-2801	Anti-reverse claw spring
15	B21-5901	Worm shaft	53	B12-0701	Anti-reverse claw
16	B10-0301	Worm shaft holder	54	B34-3301	Set plate screw
17	B21-6201	Worm shield	55	B12-0201	Spool adjusting cap metal
18	B21-6401	Line guide	56	637-0601	"O" ring
19	B09-9701	Shield bushing	57	B12-7801	Spool adjusting cap
20	373-1302	Worm shaft holder washer	58	B21-4901	R. S. ring
21	320-5901	Worm shaft retainer	59	353-5203	R. S. plate screw
22	121-4211	Line guide pin	60	B12-1101	Gear shaft
23	375-0800	Line guide washer	61	375-2901	Drive gear washer
24	341-5901	Line guide nut	62	B12-1401	Drive gear
25	353-9801	Rod clamp screw	63	B12-1501	Drag washer A
26	341-9701	Rod clamp nut	64	375-6203	Drag washer B
27	041-5601	Rod clamp	65	375-6302	Drag washer C
28	342-2111	Rod clamp wing nut	66	375-6204	Drag washer D
29	375-7403	Ball bearing metal washer	67	151-8701	Tension spring
30	633-8811	Ball bearing	68	B36-5101	Spacing sleeve
31	B21-5501	Click spring retainer	69	B21-5001	Star drag
32	160-7922	Click spring	70	B17-2801	Handle washer
33	352-9501	Click spring screw	71	B12-1603	Handle
34	320-5901	Spool gear ret. ring	72	B26-7401	Handle nut
35	403-2901	Spool gear	73	371-0604	Handle nut washer
36	B21-5601	Spool	74	320-5901	Handle nut retainer
37	B12-0801	Set plate	75	B15-2301	Handle nut plate
38	B03-7201	Set plate screw retaining nut	76	351-1801	Handle nut plate screw